

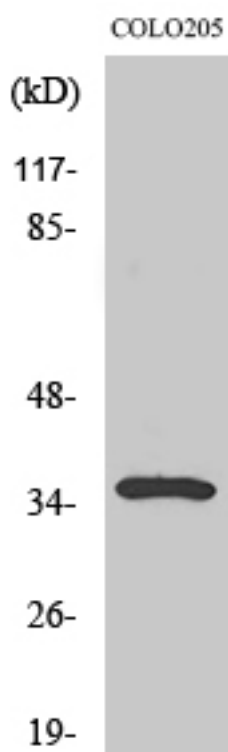


# Galectin-4 Polyclonal Antibody

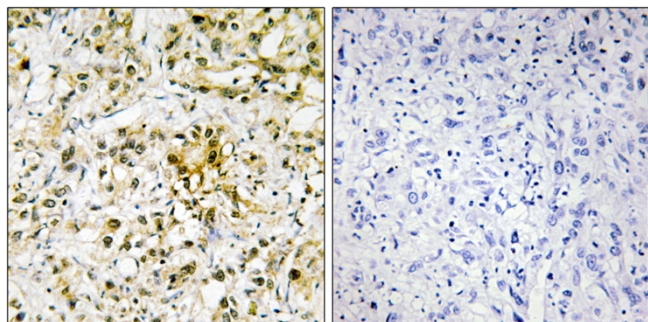
<b>Catalog No</b>	YP-Ab-00405
<b>Isotype</b>	IgG
<b>Reactivity</b>	Human;Rat;Mouse;
<b>Applications</b>	WB;IHC;IF;ELISA
<b>Gene Name</b>	LGALS4
<b>Protein Name</b>	Galectin-4
<b>Immunogen</b>	The antiserum was produced against synthesized peptide derived from human LEG4. AA range:61-110
<b>Specificity</b>	Galectin-4 Polyclonal Antibody detects endogenous levels of Galectin-4 protein.
<b>Formulation</b>	Liquid in PBS containing 50% glycerol, 0.5% BSA and 0.02% sodium azide.
<b>Source</b>	Polyclonal, Rabbit,IgG
<b>Purification</b>	The antibody was affinity-purified from rabbit antiserum by affinity-chromatography using epitope-specific immunogen.
<b>Dilution</b>	WB: 1/500 - 1/2000. IHC: 1/100 - 1/300. ELISA: 1/20000.. IF 1:50-200
<b>Concentration</b>	1 mg/ml
<b>Purity</b>	≥90%
<b>Storage Stability</b>	-20°C/1 year
<b>Synonyms</b>	LGALS4; Galectin-4; Gal-4; Antigen NY-CO-27; L-36 lactose-binding protein; L36LBP; Lactose-binding lectin 4
<b>Observed Band</b>	36kD
<b>Cell Pathway</b>	extracellular space,cytosol,plasma membrane,
<b>Tissue Specificity</b>	Colon,Colon carcinoma,Gastric carcinoma,Skin,
<b>Function</b>	domain:Contains two homologous but distinct carbohydrate-binding domains.,function:Galectin that binds lactose and a related range of sugars. May be involved in the assembly of adherens junctions.,online information:Galectin-4,similarity:Contains 2 galectin domains.,subunit:Monomer.,
<b>Background</b>	The galectins are a family of beta-galactoside-binding proteins implicated in modulating cell-cell and cell-matrix interactions. The expression of this gene is restricted to small intestine, colon, and rectum, and it is underexpressed in colorectal cancer. [provided by RefSeq, Jul 2008],
<b>matters needing attention</b>	Avoid repeated freezing and thawing!

**Usage suggestions**

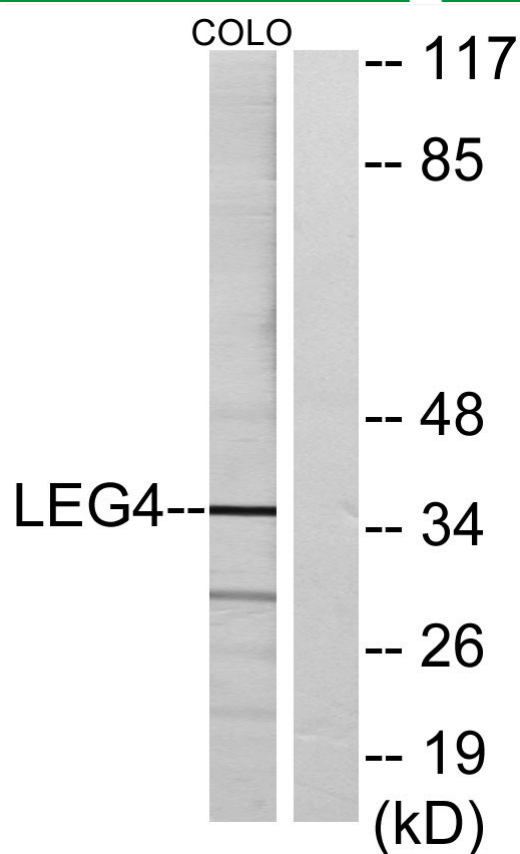
This product can be used in immunological reaction related experiments. For more information, please consult technical personnel.

**Products Images**

Western Blot analysis of various cells using Galectin-4 Polyclonal Antibody



Immunohistochemistry analysis of paraffin-embedded human liver carcinoma tissue, using LEG4 Antibody. The picture on the right is blocked with the synthesized peptide.



Western blot analysis of lysates from COLO cells, using LEG4 Antibody. The lane on the right is blocked with the synthesized peptide.